



FILTRATION TECHNOLOGY

*Wir bieten Lösungen!*

# Sample filtration with TMS-C system

for the inlet of sewage treatment plants



# TMS-C system with automatic filter cleaning

## Filtration for the inlet of sewage treatment plants

Reliable and easy to maintain

### Application

The TMS-C system is specially designed for sample preparation of On-Line analyzers. Due to the periodic backflushing with detergent, the system is particularly suitable for measurements in the inlet of municipal sewage treatment plants and industrial waste water. It can also be operated as a tank installation. The overall system includes system cabinet, filter probe and basin fixing.

### System cabinet

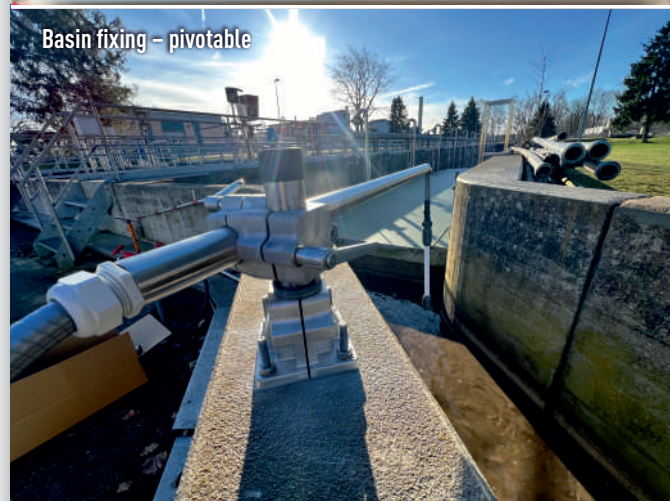
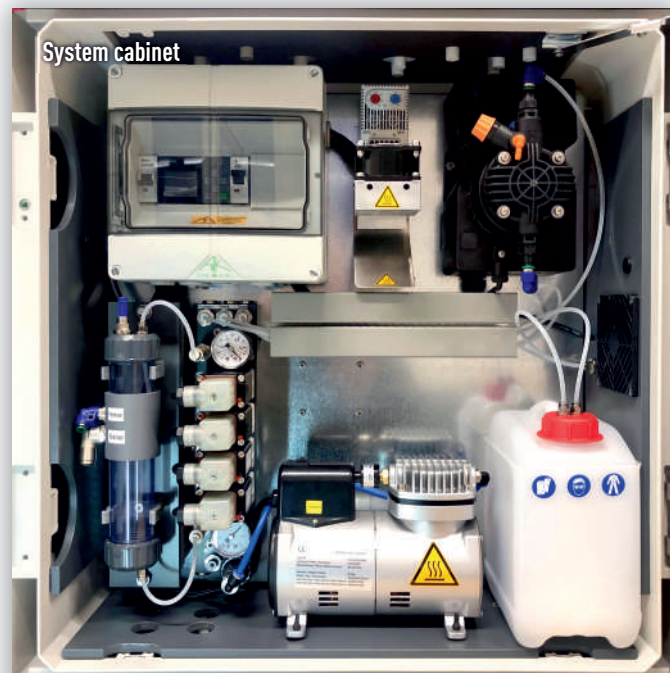
The low maintenance membrane pump pumps the permeate out of the waste water by means of a submerged filter probe. The current liquid sample is then made available to the measuring device. Compressed air and chemical flushing ensure effective cleaning of the filter probe. These cleaning intervals can be set individually in the control program, depending on the local boundary conditions. The compressor required for compressed air cleaning is integrated in the system cabinet. The outdoor installation of the system is ensured by heating the cabinet and the filtrate lines.

### Membrane probe

The filter probe is submerged in basins or canals by means of a holder. It consists of the membrane insert, the upper and lower part of the probe. Different membrane inserts are available for selection. If necessary, the membrane insert can be easily and quickly replaced by a cleaned or new insert. The low weight of the submerged filter probe is of great advantage for handling.

### Basin fixing

The stainless steel/aluminum basin bracket is supplied with a base and is easy to install. The bracket can be swiveled and adjusted in height using a quick-release fastener, which ensures both easy maintenance and quick replacement of the membrane insert.





### Advantages

- Backflushing of membrane with chemicals and compressed air
- Low weight of the filter probe
- Particle-free filtrate
- Low dead time because of small sample volume
- High operational reliability
- Suitable for inlet
- Indoor or outdoor version available
- Use in basins and canals
- Tank installation possible

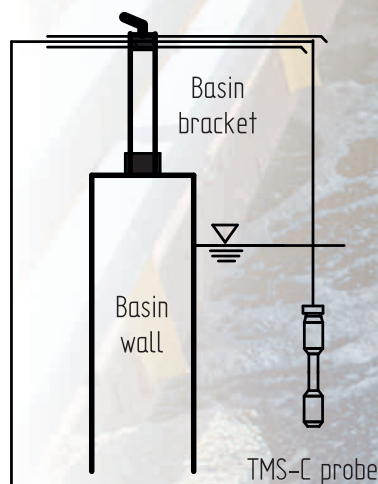
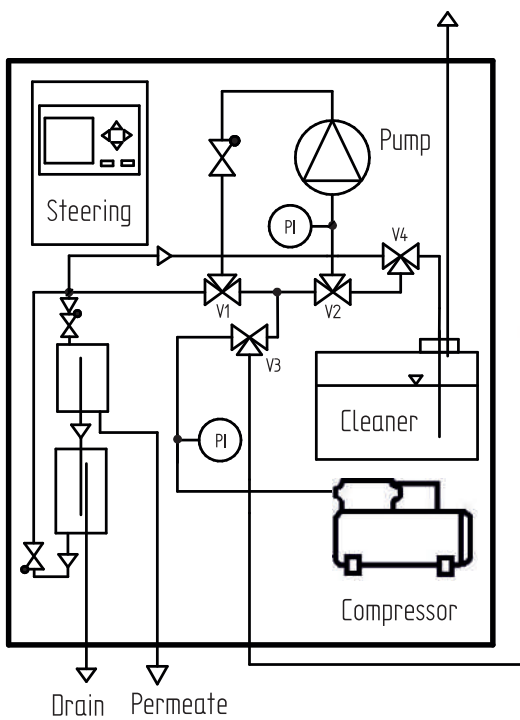
### Technical data

#### Operating data

- Power supply: 230 V / 50 Hz or 110 V / 50 Hz
- Ambient temperature: -20°C till +45°C
- Membrane surface: 230 cm<sup>2</sup>
- Weight filter: unit 0.5 kg

#### Materials

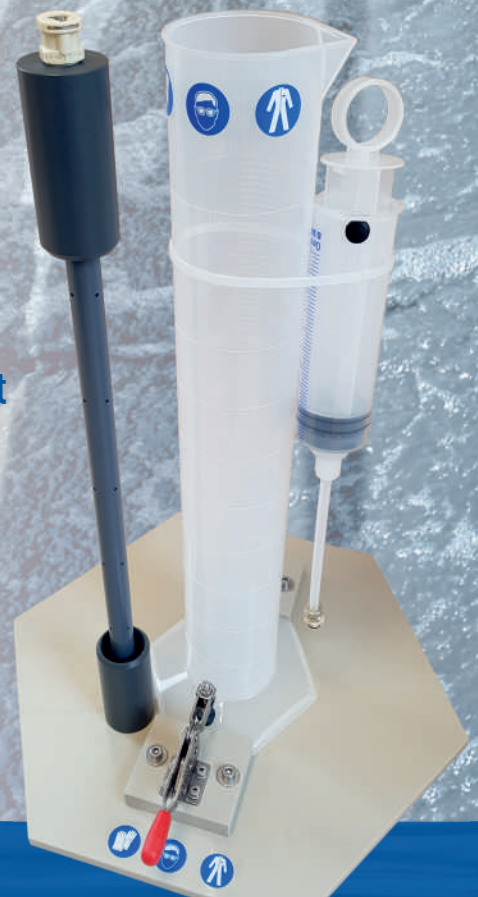
- Housing: PVC
- Sealings: EPDM, FKM
- Hoses: PE
- Pump: PP, FKM, PTFE



### TMS-C filter probe



### TMS-C cleaning set





FILTRATION TECHNOLOGY

*Wir bieten Lösungen!*

ETL Verfahrenstechnik GmbH  
Zechenstraße 20  
D-86971 Peiting  
GERMANY

phone +49 8861 930907-0  
fax +49 8861 930907-1  
info@etl-technology.de



The information contained in this document has been compiled to the best of our knowledge. This information is intended as a guide, its correctness is not guaranteed. It is the responsibility of the user to determine the suitability of the described products for the particular process conditions. Since we have no control over the specific process conditions, we accept no liability concerning the use and handling of the delivered products.